

Shaw's Field - Fields 1 – 8, and Field 15



DIRECTIONS

From North - To Shaw Field (Fields 1-8, F15)

95 South to Exit 32 (Biddeford). Turn right onto Rte 111 (west) and follow into Sanford. At the set of lights, turn right onto Rte 224 (there will be a John Deere dealership at this intersection). Shaw Field will be ½ mile on the left. Please use satellite parking (also on the left). ***There will be equipment drop off/pickup at the front gate.

From South - To Shaw Field (Fields 1-8, F15)

95 North to Exit 19 (Wells/Sanford). Turn right onto Rte 109 and follow into Sanford. At the set of lights turn right onto Jagger Mill Road about 1.5 miles before the intersection of RTE 4 and RTE 109). Follow to the end and turn right onto route 4. Follow to the first full set of lights. Take a left onto Grammar Road. Follow Grammar Road to the first set of traffic lights. This is Rte 224. Shaw Field is ½ mile on the left. Please use satellite parking (also on the left).

Carl J Lamb – Field 14 U13/U14

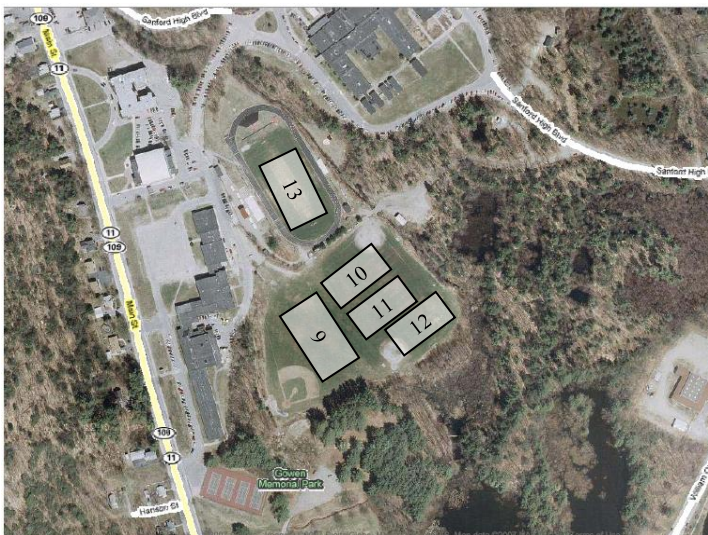


Carl J Lamb Field (F-14)

This field is located behind the Carl J Lamb Elementary School. The school is on Rte 224, approximately ½ mile from Shaw Field. At the light, take a right into the school parking lot.

*** This field will be used instead of Cobb Stadium in the event of rain ***

Blouin (F9 – F12) and Cobb Stadium (F13)



From Shaw Field (F1-F8, F15) to Blouin/Cobb Fields (F9-F13)

Leaving Shaw field, take a left onto Rte 224 and proceed to the lights. At the lights, take a sharp left onto River Street (Carl J Lamb Elementary School will be on your right) and follow for approximately ½ mile. Take second right onto the Army Rd, proceed by Number One Pond (on left) and take a right at the circle.

Blouin (F9-F11) - Take your first right into parking lot. Blouin fields are located to the left rear of parking area.

Cobb (F13) - Go to Stop sign and turn right onto Main Street. Take your first right into the Sanford Jr High School (immediately after tennis courts). Cobb Stadium is located behind the Jr High. There is limited parking behind the school. ***In case of RAIN - Cobb Stadium will not be used if it is raining. See directions to Carl J. Lamb field.

Blouin (F9 – F12) and Cobb Stadium (F13)



Carl J Lamb – Field 14



Shaw's Field - Fields 1 – 8, Field 15



DIRECTIONS

From North - To Blouin and Cobb Fields (Fields 9-13)

95 South to Exit 32 (Biddeford). Turn right onto Rte 111 (west) and follow into Sanford. Instead of turning right onto Rte 224 (as above), continue on through another set of lights until you are at the intersection with Rte 109 (Main St). Turn right onto Main Street and proceed approx. a mile.

Blouin (F9-F12)- Turn right onto Gowen Park Dr (this is between tennis courts and the Gowen's Park Gazebo). Take your next left into parking lot. Blouin Fields are located to the left rear of the parking area.

Cobb (F13) - Turn right into the Sanford Junior High School parking lot (immediately after the tennis courts). Cobb Stadium is located behind the Junior High. There is limited parking behind the Jr High. (*Note: You may also access Blouin Fields behind the Jr High). ***In case of RAIN - Cobb Stadium will not be used if it is raining. See Directions to Carl J Lamb field.

From South - To Blouin and Cobb Fields (Fields 9-13)

95 North to Exit 19 (Wells/Sanford). Turn right onto Rte 109 and follow into downtown Sanford. You will go through several sets of lights and pass by landmarks such as Walmart (left), McDonalds (right), Dunkin Donuts (left), and Hannafords (right).

Blouin (F9-12) - Turn right onto Gowen Park Dr (this is between tennis courts and the Gowen's Park Gazebo). Take your next left into parking lot. Blouin Fields are located to the left rear of the parking area.

Cobb (F13) - Turn right into the Sanford Junior High School parking lot (immediately after the tennis courts.) Cobb Stadium is located behind the Jr High. There is limited parking behind the school. (Note: You may also access Blouin fields behind the Jr High)

Carl J Lamb Field (F-14)

This field is located behind the Carl J Lamb Elementary School. The school is on Rte 224, approximately ½ mile from Shaw Field. At the light, take a right into the school parking lot.

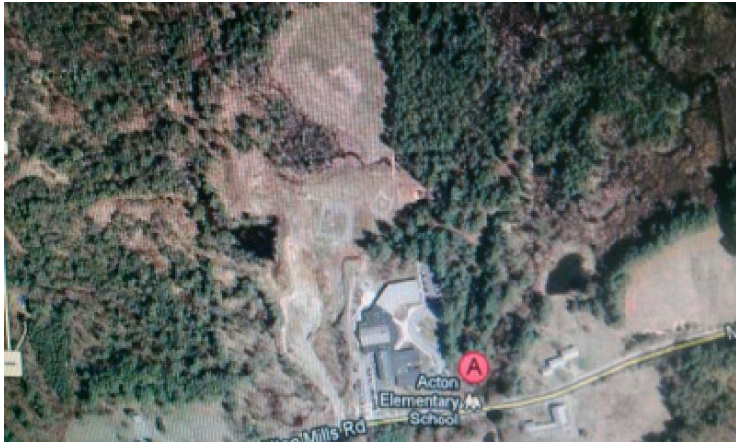
*** This field will be used instead of Cobb Stadium in the event of rain ***

From Blouin/Cobb Fields (F9-F13) to Shaw Field (F1-F8), F15

Blouin to Shaw - Take a left out of Blouin parking lot onto and follow to stop sign. Go around the circle and exit on the last turn before you get back to where you started. (Number One Pond will be on your right) and go to the next stop sign. Take a left onto River Street and proceed to the set of lights (Carl J Lamb Elementary School will be straight across this intersection). Take a sharp right onto Rte 224. Shaw Field parking is approximately 1 mile on the right. ***There will be equipment drop-off/pickup at the front gate.

Cobb to Shaw - Take a left out of Jr High parking onto Main Street. Take your next left onto Gowen Park Dr and follow to stop sign. Take a left around the circle (Number One Pond will be on your right) and go to the next stop sign. Take a left onto River Street and proceed to the set of lights. Take a sharp right onto Rte 224. Shaw Field parking is approximately 1 mile on the right. ***There will be equipment drop-off/pickup at the front gate.

Acton Elementary



Acton Elementary (Saturday)

This field is located behind the Acton Elementary School at 700 Milton Mills Road, Acton ME. Start out going northeast on Shaw Rd toward Shaws Ridge Rd / ME-224. Turn left onto Shaws Ridge Rd / ME-224. Continue to follow ME-224. Turn slight left onto Bridge St / ME-224. Take the 1st right onto Main St / ME-11 / ME-109. Continue to follow ME-109. Turn left onto Milton Mills Rd.

*** This field is being used instead of Cobb Stadium due to scheduling conflict Saturday until 3pm *** Will also be used in case of rain.